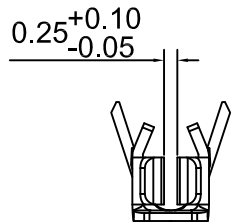
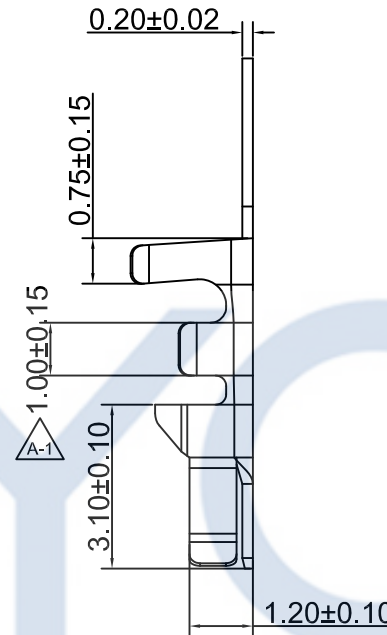
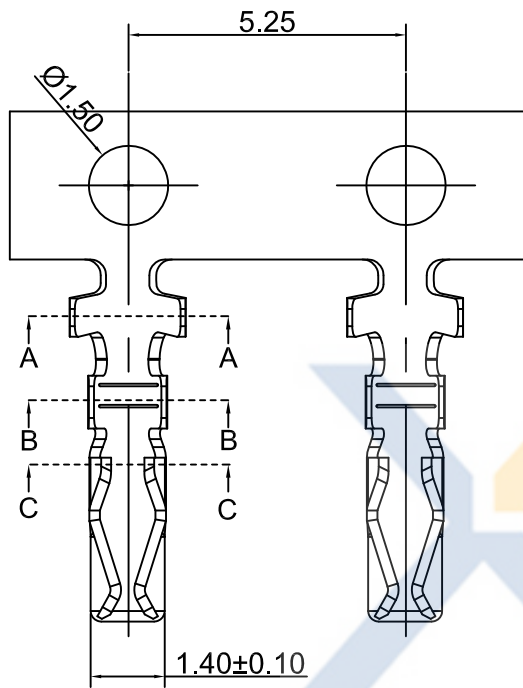
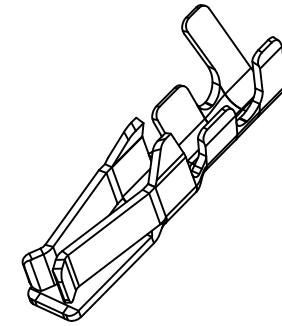
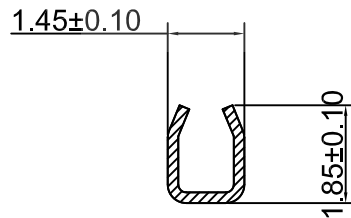


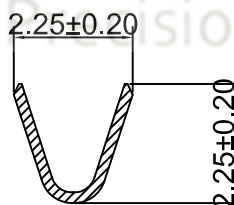
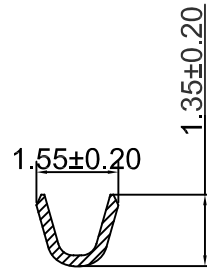
DRAWING FOR CUSTOMER



Section:C-C



Section:B-B



Section:A-A

■SPEC.:

- Rated Voltage:250V AC,DC
- Rated Current:3A AC,DC
- Withstand Voltage:800V AC/minute
- Contact Resistance:20mΩ max
- Insulation Resistance:1000MΩ min
- Temperature Range:-25℃~+85℃

■Terminal:

- Material:Phosphor Bronze
- Finish:Tin-plated,over Nickel
- Applicable wire:AWG#24~30
- QTY.:12KPCS/Reel

KB935-X X T 1 A

- 1:All plated
- 2:Half plated

Plating

- 0: Tin-plat
- 1: Gold Flash
- 2: Gold Plat3u"
- 3: Gold Plat5u"

Version

Mold No.

Terminal

XYCO 东莞市轩业电子科技有限公司
TEL: 0769-8297 9981/2/3 http://www.XYCO.com.cn

2016-06-20	A-1	优化产品	KB935-XXT1A	Devin	TOLERANCE 公差	DRAWING 設計者	Devin	KB935-XXT1A	
2014-06-20	A		KB935-XXT1A	Devin	.X=±0.30 .XX=±0.20 .XXX=±0.10	CHECKED 審查	Thomas	PART NO. 料號	
DATE 日期	VER 版本	CHANGE HISTORY 變更歷史	CHANGED NAME 修改後料號	DRAWING 變更者		APPROVED 核准	William	DWG NO. 圖號	PE5004A

UNIT 單位	mm	PRODUCT NAME 產品名稱	PHS PH2.00 Wire To Board Terminal
------------	----	----------------------	--------------------------------------